

Tour Code: FCGZA



# 多彩贵州 之玩美旅程

贵州精华 **8天7晚游**

8D7N TOUR IN GUIZHOU



黔灵山公园 | 西江千户苗寨 | 多彩贵州城 | 都匀秦汉影视城 | 天龙屯堡 | 青云市集  
石板街 | 独山天洞 (含电瓶车) | 格鲁格桑十八寨 | 夜郎谷 | 白宫 (外观)  
安顺古城 | 花江峡谷大桥 (观景台打卡/不上桥) | 夜游黄果树大瀑布 | 青岩古镇 | 甲秀楼

吃

### 地道美食

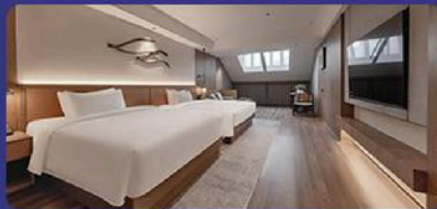
高山流水长桌宴/状元宴  
花开富贵宴/药膳鸡/肉饼鸡



住

### 地道美食

全程四星酒店  
奢华体验



行

### 陆地头等舱

2+1陆地头等舱保姆车  
舒适皮质沙发 随车配备USB充电接口



AQ1212 KUL - KWE (吉隆坡-贵阳) 19:35-23:55 AQ1211 KWE - KUL (贵阳-吉隆坡) 14:10-18:35

**豪华酒店** 全程网评 **4** 钻酒店(升级1晚独山豪利维拉酒店 或同级)

**风味美食** 高山流水长桌宴+花开富贵宴+药膳鸡+青岩状元宴



### 第1天：吉隆坡--(飞机)--贵阳

🕒 ××晚 (机上简餐) 🏠 贵阳4钻 (贵阳格林东方酒店或贵阳观山湖智选假日酒店或同级)

集合于吉隆坡国际机场，然后乘搭国际航班飞往贵阳。

**参考航班：AQ1212 KUL-KWE (吉隆坡-贵阳) 19:35-23:55**

### 第2天：黔灵山公园--西江千户苗寨+环保车

🕒 早中晚 🏠 凯里4钻 (凯里和谐黔景酒店或凯里凯翔希悦大酒店或同级)

**【黔灵山公园】** 贵阳“城市绿肺”，集山、林、泉、湖、洞、寺于一体，可登山健行，也可参观弘福寺，或与散养的猕猴不期而遇。

**【西江千户苗寨】(含观光车+保险)** 一个保存苗族“原始生态”文化完整的地方，由十余个依山而建的自然村寨相连成片，居住着“西”氏族苗族。山坡上层层叠叠苗家木质吊脚楼，咖啡色的老房子依着碧绿的群山，白水河将寨子一分为二，河的这边主要是商业步行街，河的对岸主要是俯瞰寨子的观景台。

### 第3天：都匀秦汉影视城--石板街--独山天洞 (含电瓶车)

🕒 早中晚 🏠 独山5钻 (独山豪利维拉酒店或都匀星悦湾酒店或同级)

**【都匀秦汉影视城】** 西南地区最大的古代宫殿群影视城，以秦汉建筑风格为主，气势恢宏，是《庆余年》等热门影视剧的取景地，瞬间带你穿越千年。

**【石板街】** 都匀的历史老街，街道由上万块青石铺砌而成，可寻觅当地特色小吃。

**【独山天洞】(含电瓶车)** 是一个集3.7亿年溶洞奇观、布依族风情、田园风光与亲子游乐为一体的综合性旅游目的地。其“天庭文化”主题鲜明，体验多元，是打造差异化线路的优质资源。

### 第4天：格鲁格桑十八寨--夜郎谷--安顺古城

🕒 早中晚 🏠 安顺4钻 (安顺远承云栖酒店或安顺维也纳酒店或同级)

**【格鲁格桑十八寨】** 格鲁格桑在苗语中意为“世外桃源”象征景区的自然和人文景观如此美好！里面展示这里苗族、侗族和布依族传统文化风情和自然景观为特色。

**【夜郎谷】** 一个充满神秘色彩的石头城堡，由贵州艺术家宋培伦先生花费20年心血建造。谷中遍布用石头垒砌的雕塑，造型奇异，展现了古老的夜郎文化图腾。

**【安顺古城】** 又名“安顺府文庙”，已有六百多年历史，是贵州现存最古老的文庙建筑群。可感受安顺深厚的历史文化底蕴。

### 第5天：花江峡谷大桥--夜游黄果树大瀑布--安顺

🕒 早中晚 🏠 安顺4钻 (安顺远承云栖酒店或安顺维也纳酒店或同级)

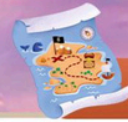
**【花江峡谷大桥】(观景台打卡, 不安排上桥)** 在云渡服务区远眺大桥雄姿和峡谷风光，花江峡谷大桥飞架于“地球裂缝”花江大峡谷之上，超越杭瑞高速公路北盘江大桥，成为世界第一高桥，也是贵州新晋网红打卡地。

**【夜游黄果树】(含观光车+保险+大瀑布扶梯)** 漫步于被光影点缀的森林小径，途中还能观赏到别具一格的民族表演，欣赏与白天截然不同的景色。巨大的水幕在多彩灯光的照射下，让瀑布更加雄伟和梦幻，场面十分震撼。

### 第6天：天龙屯堡--贵阳白宫--多彩贵州城--贵阳

🕒 早中晚 🏠 贵阳4钻 (贵阳善润云庭或贵阳诺富特或同级)

**【天龙屯堡】(含电瓶车+地戏表演)** 整个景区寨子依河而建，是一个集观光、休闲、度假、会展为一体的大型综合业态旅游目的地景区。除了白日看景，夜暮观灯的自然人文景观，丰富精彩的文化表演也是贵州乌江寨的一大特色。



在廊桥漫步，可以看到优雅翩然的独竹漂；在茶馆闲坐，可以欣赏杂技、曲艺、舞蹈演出；经过廻龙岛，可以参与盛世鼓舞、竹竿舞、仡佬盘歌等具有黔北民族特色的歌舞表演。

**【白宫】外观**，贵阳花果园地标建筑，一座极尽奢华的私人宫殿，依山而建，气势恢宏。它是贵阳最魔幻的夜景，也是无数镜头追逐的焦点。

**【多彩贵州城】**一个展示贵州多彩民族文化的大型文化旅游综合体，是了解贵州省情和民族风情的窗口。

### 第7天：青岩古镇--甲秀楼--青云市集

🕒 早中× 🏠 贵阳4钻 (贵阳善润云庭或贵阳诺富特或同级)

**【青岩古镇】**贵州四大军事古镇之一，始建于明代。古镇内设计精巧的明清古建筑交错密布，寺庙、楼阁画栋雕梁，可沿古驿道攀登定广门城墙。

**【甲秀楼】**贵阳的标志性建筑，坐落于市区内南明河中的一块巨石上，是一座三层的木质阁楼，其名字取“科甲挺秀”之意，是来贵阳的游客必去的景点。

**【青云市集】**素有贵阳“深夜食堂”之称，是贵阳市民和游客必逛的美食街区，浓厚的烟火气让这里形成了独特的美食文化。这里有极具特色的文化元素、地道的贵州特色美食、丰富多彩的商业圈以及有趣的打卡地和休闲娱乐场所，吸引着大家前来前往打卡，共享美好生活。

### 第8天：贵阳--(飞机)--吉隆坡

🕒 早×× 🏠 温馨的家

集合于贵阳国际机场，然后乘搭国际航班飞往吉隆坡。

**参考航班：AQ1211 KWE - KUL (贵阳-吉隆坡) 14:10-18:35**

**保证附加项目 (价格RM)：独山天洞+天龙屯堡+都匀影视城+夜朗谷 - RM 300 每人**

**购物店：翡翠店+达仁堂或丝绸店 (实际购物站名称以出团确认件为准)**

**舌尖上的美食&地道风味：高山流水长桌宴、状元宴、花开富贵**

**包含：全程机场税+贵阳始发 20KG 行李津贴+吉隆坡始发 20KG 行李津贴+司机导游小费**

最后确认的行程将以旅行团抵达各地后接待社安排为准，在不可预知的情况下，我社保留删改行程内容的权利，恕不预先通知。旅游配套包含69岁及以下旅行者的旅游保险。

### Day1: Kuala Lumpur -- Guiyang

🕒 ××MOB(Snack Box) 🏠 Guiyang GreenTree Eastern / HIX Guanshanhu or SML

Assemble at KLIA for flight to Guiyang. Upon arrival, transfer to hotel for rest.

Reference flight: AQ1212 KUL-KWE (Kuala Lumpur - Guiyang) 19:35-23:55

### Day2: Qianlingshan Park – Xijiang Thousand Households Miao Village + Shuttle Bus

🕒 BLD 🏠 Kaili Hexie Qianjing / Kaixiang Xiyue Hotel or SML

**Qianlingshan Park** is known as the "urban green lung" of Guiyang, integrating mountains, forests, springs, lakes, caves, and temples. Visitors can hike up the mountain, visit the Hongfu Temple, or unexpectedly encounter free-ranging macaques.

**Xijiang Qianhu Miao Village** (including sightseeing bus) is the largest Miao community in the world.



Comprising over 1,468 households and more than 6,000 residents, with 99.5% of the population being ethnic Miao, it is often hailed as an "open-air museum" of Miao cultures.

### Day3: Duyun Qin-Han Film City - Shibian Street -Dushan Tian Cave

📍 BLD 🏠 Dushan Holiday Villa / Duyun Xingyuewan Hotel or SML

**Duyun Qin and Han Dynasty Film and Television City** is the largest ancient palace complex film and television city in the southwest region, primarily featuring Qin and Han architectural styles. With its magnificent atmosphere, it has served as a filming location for popular TV series such as "The Legend of Qing Dynasty", instantly transporting you back in time for a thousand years.

**Shibian Street** is Duyun's historic old street, paved with tens of thousands of blue-stones, offers a chance to explore local specialty snacks.

**Dushan Tiandong**(Sky Cave) Scenic Area(incl. Shuttle bus), offers a unique "Heavenly Palace" themed journey into a 370-million-year-old karst cave, combined with Buyi ethnic culture.

### Day4: Gelugesang 18 Villages - Yelang Valley - Anshun Ancient Town

📍 BLD 🏠 Anshun Yuancheng Yunqi / Vienna Hotel or SML

**Gelugesang 18 Villages** Gelugesang means "Xanadu" or "land of idyllic beauty" in the Miao language, symbolizing the stunning natural and cultural scenery of the scenic area. It features the traditional culture and customs of the local Miao, Dong and Buyi ethnic groups, as well as magnificent natural landscapes.

**Yelang Valley**, is a unique artistic and cultural tourist attraction renowned as a "mysterious stone kingdom." This park is a profound integration of ancient Yelang Kingdom culture, local Tunpu culture, and the distinctive karst topography of Guizhou.

**Anshun Ancient Town**, The 600-year-old Tunpu culture is vividly inherited here, where the legacy of the Jianghuai region and the customs of central Guizhou blend and coexist. Anshun Ancient Town is more than just a city; it is a tangible, audible, and tasteful living history book, waiting for every traveler to read.

### Day5: Huajiang Bridge - Night Tour of Huangguoshu Waterfall - Anshun

📍 BLD 🏠 Anshun Yuancheng Yunqi / Vienna Hotel or SML

**Huajiang Canyon Bridge** spans over the "Earth's crack" Huajiang Grand Canyon, surpassing the Beipanjiang Bridge on the Hangzhou-Ruili Expressway to become the world's tallest bridge. It has also become a newly popular tourist attraction in Guizhou.

**Night Tour to Huangguoshu Waterfall** (Includes Shuttle bus +R-trip escalator): Stroll along the forest paths dotted with light and shadow, and enjoy unique ethnic performances along the way. Admire the scenery that is vastly different from the daytime view. The night tour transforms the majestic Huangguoshu Waterfall into a stunning canvas for light and art.

### Day6: Tianlong Tunpu - Guiyang White House - Colorful Guizhou City - Guiyang

📍 BLD 🏠 Guiyang Shanrun Yunting Hotel or SML

**Tianlong Tunbao** (including Buggy + local opera performance) is a well-preserved ancient fortress village located in the mountainous region of Anshun City, Guizhou Province. With a history dating back over 600 years to the early Ming Dynasty (14th century), it is often described as a "living fossil of the Ming Dynasty"

**Guiyang White Palace** Known as "China's No. 1 Luxury Mansion," the Guiyang White Palace is a landmark notable for its grand European-style architecture and lavish design.



**Colorful Guizhou City** is a large-scale cultural tourism complex showcasing the colorful ethnic culture of Guizhou, serving as a window for understanding the provincial conditions and ethnic customs of Guizhou Province.

### Day7: Qingyan Ancient Town -- Jiaxiu Pavilion -- Qingyun Market

🕒 BL× 🏠 Guiyang Shanrun Yunting Hotel or SML

**Qingyan Ancient Town**, as one of Guizhou's four great ancient towns, it was originally established in 1378 AD as a military garrison during the Ming Dynasty. Walk its storied paths, touch its stone walls, taste its history, and create your own memories in this living museum of Chinese culture.

**Jiaxiu Pavilion** stands as a witness to Guiyang's history and a symbol of its cultural development.

**Qingyun Market:** Guiyang's unique night culture and tourism consumption agglomeration area; visit characteristic blocks that coexist with "the historical sense of the daily life of city" and "the youthful fashion trend".

### Day8: Guiyang -- Kuala Lumpur

🕒 B×× 🏠 Sweet Home

After breakfast transfer to Guiyang International Airport and take a flight back to Kuala Lumpur.

Reference flight: AQ1211 KWE-KUL (Guiyang-Kuala Lumpur) 14:10-18:35

- ◆ **Compulsory additional tour : Dushan Heavenly Cave + Tianlong Tunpu + Duyun Movie Town + Yelang Valley**
- ◆ **Shopping stores: Jade Store + Darentang TCM or Silk Store**
- ◆ **Delicacies & Authentic Flavors: High Mountain and Flowing Water Long Table Banquet, Zhuangyuan Banquet, Prosperity Banquet**

**INCLUDE: All Airport Taxes, 1 piece of 20KG luggage allowance, Tipping.**

The order of itinerary is subject to the final discretion of local land operator, we reserve right to amend the itinerary due to the unforeseen circumstances without prior notice\*The group.

Tour package includes travel insurance for travellers up to 69 years old



## 优选景点

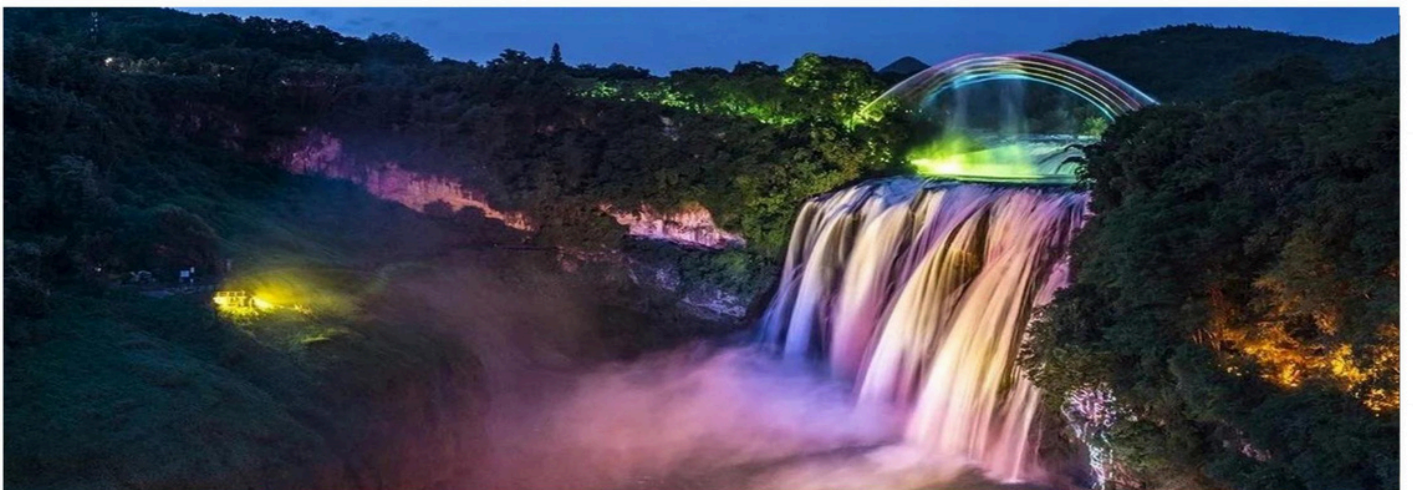
Preferred attractions



▲ 花江峡谷大桥  
Huajiang Gorge Bridge



▲ 西江千户苗寨  
Xijiang Thousand-House Miao  
Village



▲ 黄果树大瀑布  
Huangguoshu Waterfall



## 优选景点

Preferred attractions



▲ 秦汉影视城  
Qinhan Film City



▲ 天龙屯堡  
Tianlong Tunpu



▲ 格鲁格桑十八寨  
Gelugesang Eighteen Villages



▲ 黔灵山公园  
Qianling Mountain Park



▲ 青岩古镇  
Qingyan Ancient Town



## 优选景点

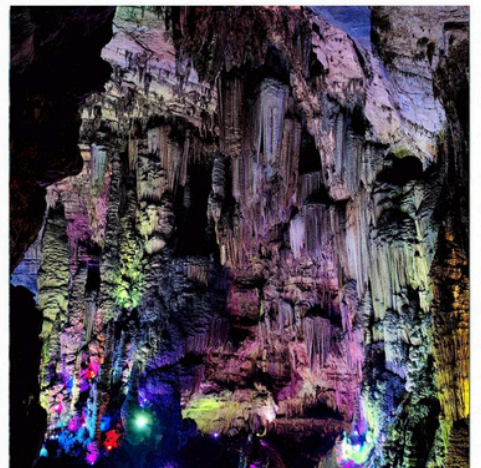
Preferred attractions



▲ 白宫  
GUIYANG WHITE HOUSE



▲ 夜郎谷  
YELANG VALLEY



▲ 独山天洞  
DUSHAN HEAVENLY CAVE

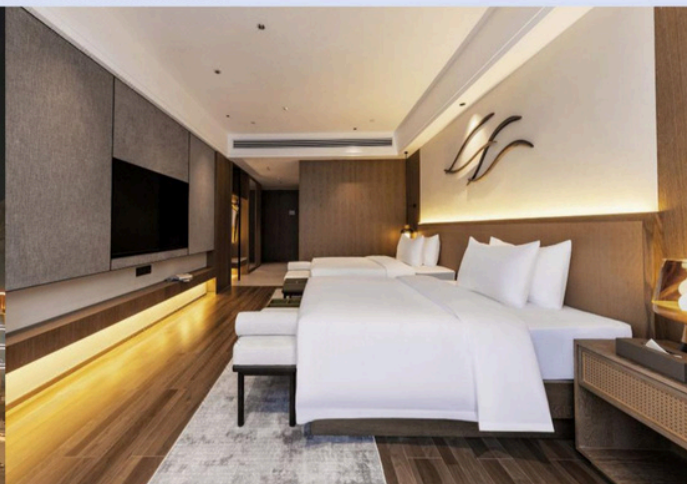


尊享住宿

Enjoy your stay

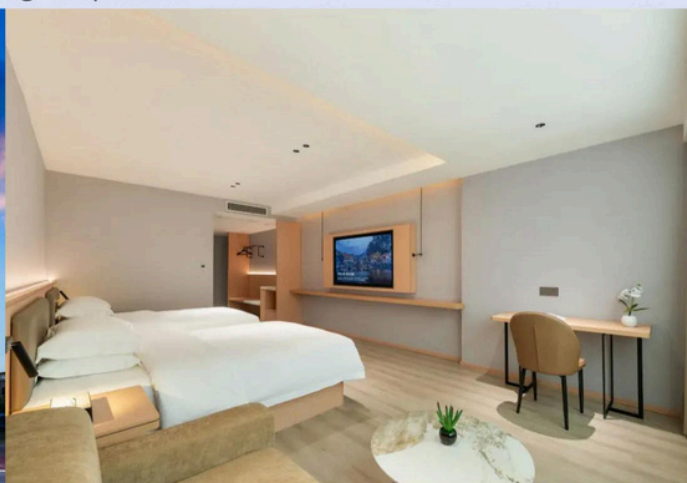
### 独山豪利维拉酒店

Dushan Holiday Villa Zilin Mountain



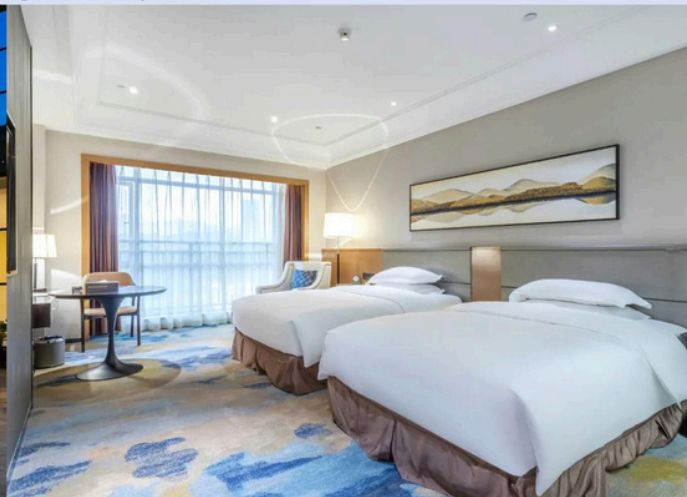
### 安顺远承云栖酒店

Anshun Yuancheng Yunqi Hotel



### 贵阳善润云庭或同级

Guiyang Shanrun Yunting Hotel or equivalent





## 特色用餐

Special dining



### 西江高山流水长桌宴

Xijiang High Mountain and Flowing Water Long Table Banquet



### 状元猪脚

Zhuangyuan Trotter



### 花开富贵宴

Banquet of Prosperous Flowers in Bloom



### 药膳鸡

Herbal Chicken

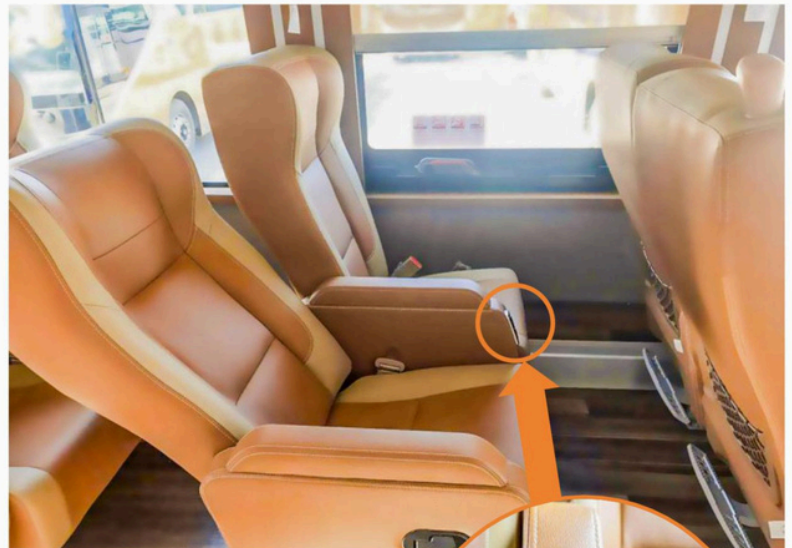


### 青岩状元宴

Qingyan Zhiyuan Banquet

## 横排2+1陆地头等舱保姆车

Horizontal 2 + 1 Land First Class Nanny Car



大空间沙发座椅更舒适;  
随车配备USB充电接口, 旅途不断电。

Large space sofa seat is more comfortable; the car is equipped with USB charging interface, and the power is not cut off during the journey.



**USB充电接口**  
USB charging interface