

# 8D6N PREMIUM KOREA

金秋奢享  
韩国

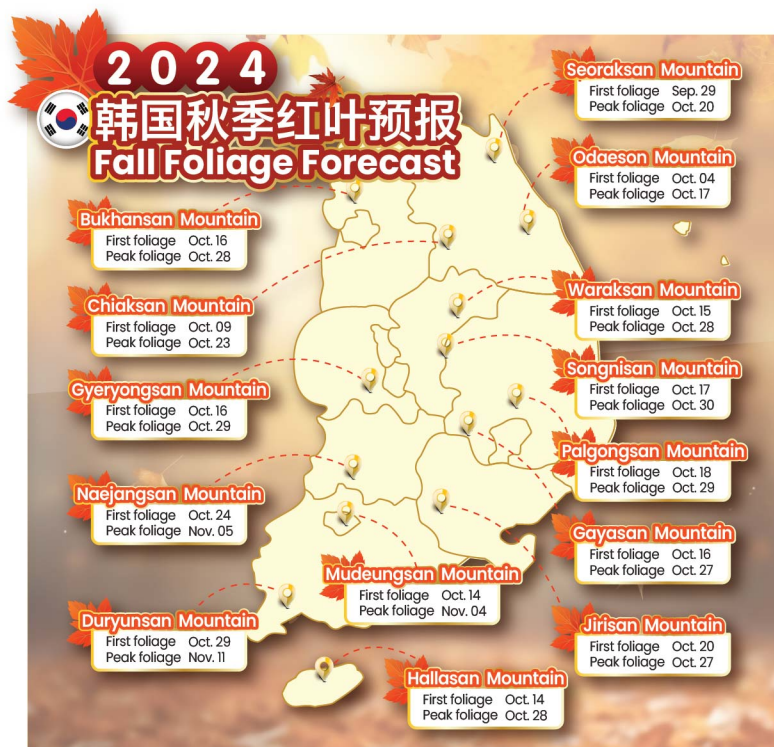
A Dream of Golden Maples

Busan | Chungcheongbuk-do | Gangwon-do |  
Chuncheon | Gyeonggi-do | Seoul  
釜山 | 忠清北道 | 江原道 | 春川 | 京畿道 | 首尔





# By The Signature Tours 由卓越旅程团队 Travel Designer Team 给您的游玩宝典



## Dear Valued Guest,

Autumn in Korea (Sep–Nov) is cool and refreshing, with mountains covered in stunning red, yellow, and orange leaves. Every step offers a beautiful view.

The peak foliage depends on temperature and rainfall, so the colors and timing may vary each year. However, even if the leaves are not at their peak, Korea in autumn is still breathtaking. Our itinerary also includes cultural experiences, delicious seasonal food, and scenic attractions to make your journey even more memorable!

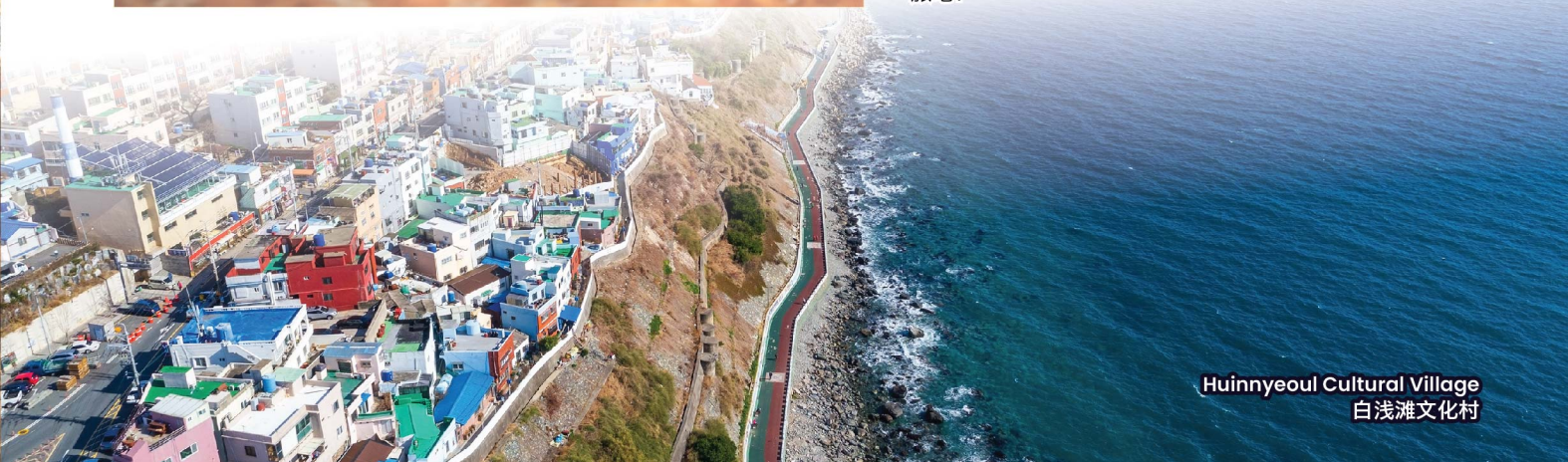
Relax, soak in the beauty of autumn, and join us on this enchanting fall adventure!

## 亲爱的旅客，

秋天的韩国（9-11月）凉爽宜人，漫山枫叶如画，美景遍布每一步。

枫叶的最佳状态受气温、降水影响，每年颜色深浅、变色时间可能不同。但即便未至巅峰，秋日的韩国依然美不胜收，我们的行程也安排了文化、美食与景点体验，让旅途更具魅力！

放松心情，享受秋日之美，和我们一起踏上秋季童话之旅吧！



Huinnyeoul Cultural Village  
白浅滩文化村



## Map 地图







8D 6N

# PREMIUM KOREA A DREAM OF GOLDEN MAPLES

BUSAN | CHUNGCHEONGBUK-DO | GANGWON-DO |  
CHUNCHEON | GYEONGGI-DO | SEOUL

DAY 01 KUALA LUMPUR ✈ INCHEON (MOB)

DAY 02 INCHEON 🚆 SEOUL 🚆 BUSAN (BB/LL/LD)

- Upon arrival at Incheon Airport, take the airport train to Seoul, then transfer to the **KTX Train** to Busan.
- Walking through **Gamcheon Culture Village**, the various themed art installations and colorful houses in the alleys create an atmosphere reminiscent of a fairytale kingdom.
- Busan International Film Festival (BIFF) Square** is a cinephile's haven. The Square's ground is embedded with numerous handprints of directors and actors who have participated in the film festival.
- Signature Food Tour**: Dive into the authentic flavors of the **Nampodong food district** and satisfy your taste buds!

Kuala Lumpur ✈ Singapore ✈ Busan

- Upon arrival at Busan Airport, visit **Gamcheon Culture Village** and start the day of tour.

DAY 03 BUSAN (HB/LL/LD)

- Haeundae Blueline Park (One-way Ticket Included)**: Ride on the coastal train, enjoy the breathtaking coastal scenery of East Busan.
- Cheongsapo Daritdol Observatory**: Standing on the transparent glass floor, you can see the ocean beneath your feet, experiencing the thrilling sensation of walking on the sea.  
\*\* If weather does not permit, attraction will be replaced with visit to Red and White Lighthouse.
- BUSAN X THE SKY** is the largest observation deck in South Korea. From the high-altitude deck, it overlooks the entire Haeundae. It also features the world's highest Starbucks on the top floor!
- Indulge in delightful water and refreshments while enjoying the **Gwangandaegyo Bridge Cruise**, where you can take in the spectacular views of Gwangan Bridge and The Bay 101.
- Huinnyeoul Culture Village**: The old houses along the coastline have been revitalized through urban renewal while preserving their historical and traditional charm.

DAY 04 BUSAN – 260KM –  
CHUNGCHEONGBUK-DO – 120KM –  
GANGWON-DO (HB/LL/LD)

- Danyang Manchionha** is a 360-degree spiral walkway with a transparent glass observation deck, offering stunning views of the Namhan River and the surrounding mountains.  
\*\* If closed, replaced with Dodamsambong Peaks
- Odaesan Woljeongsa**: Every autumn, vibrant red maple leaves surround the temple, blending with its ancient architecture to create a serene and picturesque landscape.

DAY 05 GANGWON-DO – 190KM –  
CHUNCHEON – 80KM – GYEONGGI-DO (HB/LL)

- Nami Island** is surrounded by the rivers and filled with pine and maple trees. In autumn, the island is covered in vibrant red maple leaves, creating a truly romantic atmosphere!
- Everland**: Visit Korea's largest theme park and enjoy a fun-filled adventure.

DAY 06 GYEONGGI-DO – 35KM – SEOUL (HB/LL/LD)

- Uiwang Rail Bike**: Enjoy a leisurely ride along the lakeside railway, feel the gentle breeze and enjoy the breathtaking views of the lake and mountains. (4 people per bike)  
\*\* If closed for safety maintenance, replaced with Korean Folk Village.
- Experience Korea's royal heritage by wearing a **hanbok** while exploring **Gyeongbokgung Palace**.  
\*\* If closed replace with Changdeokgung Palace.
- Grab your **VIP seats** to watch the **The Painters Show**, a live painting and cutting-edge media art show featuring action painting.

DAY 07 SEOUL (HB/LL/LD)

- Shopping Stop**: Ginseng Showroom, Hovenia Dulcis Berry Showroom, Multi Label Cosmetics Shop
- Baekbeom Square**: Take a leisurely stroll along the pathway and soak in the beauty of autumn.
- Shop, shop, shop! A trip isn't complete without shopping. Visit Seoul's famous **Myeongdong Shopping District** and enjoy a fantastic shopping spree!

DAY 08 SEOUL – 60KM – INCHEON  
✈ KUALA LUMPUR (BB)

## Meal Codes:

\*MOB=Meals on Board/HB=Hotel Breakfast/LL=Local Lunch/LD=Local Dinner  
/BB=Breakfast Box

**S** Exclusive Arrangement

## Disclaimer:

Sequences of itinerary are subject to local arrangement. Itineraries, meals, hotels and transportation are subject to change without prior notice.







8天 6晚

## 金秋奢享韩国

釜山 | 忠清北道 | 江原道 | 春川 | 京畿道 | 首尔

### 第01天 吉隆坡 ✈️ 仁川

(机上用餐)

### 第02天 仁川 🏠 首尔 🏠 釜山

(早餐盒/道地午餐/道地晚餐)

- 抵达机场后，乘搭机场列车前往首尔，然后换乘 **KTX 列车** 前往釜山。
- 🏠 • 漫步**甘川文化村**，巷子裡的各式主题艺术装置和色彩缤纷的小房子，让人仿佛置身于童话王国。
- **BIFF广场**是影迷的天堂。广场的地面镶嵌了许多参加过电影节的导演和演员的手印。
- 🍷 • **探店美食之旅**：深入探索**南浦洞美食区**，品尝正宗风味，满足您的味蕾！

### 吉隆坡 ✈️ 新加坡 ✈️ 釜山

- 抵达釜山机场后，游览**甘川文化村**，开启一天的行程。

### 第03天 釜山

(酒店早餐/道地午餐/道地晚餐)

- 🏠 • **海云台蓝线公园 (含单程车票)**：乘坐海岸列车，沿途欣赏釜山壮丽的海岸风光。
- **青沙浦桥石展望台**：站在透明的玻璃地板上可看到脚下的海洋，感受在海上行走的惊险体验。  
\*\* 若遇雨天，将替换红白灯塔
- 🏠 • **BUSAN X THE SKY** 是韩国最大的观景台。从高空可以俯瞰整个海云台，顶层还设有全球最高的星巴克！
- 🍷 • 在**广安大桥游船**上尽情享受茶点，同时欣赏壮观的广安大桥和The Bay 101。
- **白浅滩文化村**：沿着海岸线高低起伏的老屋，在都市更新后既注入了艺术气息，又保留了历史印记。

### 第04天 釜山 - 260KM - 忠清北道 - 120KM - 江原道

(酒店早餐/道地午餐/道地晚餐)

- 🏠 • **丹阳满天下天空步道**是一条360度螺旋环状步道，设有透明玻璃观景台，可俯瞰南汉江及周边山脉。  
\*\*如参加期间关闭，将替换成岛潭三峰
- 🍷 • **五台山月精寺**：每年秋天，寺庙周围红叶遍布，与古朴建筑相映成趣，营造出宁静唯美的秋日景色。

### 第05天 江原道 - 190KM - 春川 - 80KM - 京畿道

(酒店早餐/道地午餐)

- 🏠 • **南怡岛**被清澈的河流环绕，岛上种满松树和枫树，秋天时枫叶红遍韩国，浪漫的氛围顿时弥漫开来！
- 🏠 • 游览韩国最大的主题乐园**爱宝乐园**，尽享欢乐时光。

### 第06天 京畿道 - 35KM - 首尔

(酒店早餐/道地午餐/道地晚餐)

- 🏠 • **义王铁道自行车**：在湖畔铁轨上悠闲骑行，微风拂面，湖光山色尽收眼底。(4人一辆)  
\*\* 如因安全维修关闭，将改为韩国民俗村
- 👤 • 穿着**韩服**游览**景福宫**，体验韩国的皇室文化。  
\*\* 如参观期间关闭，将替换成昌德宫
- 🎨 • 坐在**贵宾席**观赏“无声”现场绘画和尖端媒体艺术的动作彩绘涂鸦秀。

### 第07天 首尔

(酒店早餐/道地午餐/道地晚餐)

- 🏠 • **土产与纪念商品店**：人参专卖店，枳椇子莓果护肝宝专卖店，连锁美妆店
- 🍷 • **凡凡广场**：沿着步道漫步，感受浓浓的秋意，是欣赏秋日美的绝佳地点！
- 买买买！怎么能不购物呢？来到首尔著名的**明洞商圈**，尽情享受购物的乐趣吧！

### 第08天 首尔 - 60KM - 仁川 ✈️ 吉隆坡

(早餐盒)

#### 免责声明：

行程次序以当地旅行社安排为准。行程，膳食，住宿，交通等可能会因不可抗拒因素而更动，恕不另行通知。



Gyeongbukgong Palace 景福宫



# 红叶为笺

写一封秋天的邀约!

단풍 사랑!

Carefree  
悠游

Enjoy relaxation, truly appreciate the world  
享受放松 感慨世界美好

Capture  
收获

The color & essence of each journey  
旅途中的色彩和精髓

Cozy  
温馨

Vibes to create joyful moment together  
共创愉悦片刻

## 丹阳满天下天空步道

## Danyang Manchcheonha Skywalk

The walkway is suspended about 90 meters above the ground. Stepping onto the transparent glass feels like walking on air—both thrilling and exhilarating. In autumn, the mountains turn golden and red, reflecting on the blue river like a beautiful painting. It's an extraordinary place to immerse yourself in the beauty of fall. Whether you seek adventure or simply want to admire the scenery, this place offers an unforgettable experience. As autumn reaches its peak, visit this place to capture stunning moments!

步道悬挂于海拔约90米的高空。踩在透明玻璃上，仿佛漫步云端，既惊险又震撼。秋天来临，群山被金黄与红色枫叶覆盖，倒映在碧蓝江面上，如水彩画般美丽，是绝佳的赏秋胜地。无论是挑战高空，还是静赏秋景，都能收获难忘旅程。趁秋色正浓，来这里捕捉最美瞬间，随手一拍都是高出片率的绝佳美景!



## 五台山月精寺

## Odaesan Woljeongsa

Ancient ginkgo, maple, and pine trees surround the temple, painting it with beautiful autumn colors. Golden and red leaves cover the mountain paths, while a gentle breeze makes them dance in the air, creating a dreamy scene. The temple's deep Buddhist culture adds a sense of peace, making it a place that touches both the heart and the eyes. Whether you love photography, exploring culture, or simply seeking quiet moments, you will find your own autumn story here, listening to the wind as it moves through the tall cedar trees.

古老的银杏树、枫树与松柏交错相映，为整座寺庙披上一层如油画般的华美景致。金黄与火红的落叶铺满山间小路，微风拂过，树叶飘落，营造出梦幻般的氛围。同时，寺庙深厚的佛教文化更添禅意，使这里成为心灵与视觉的双重盛宴。无论是摄影爱好者、文化探访者，还是寻求内心宁静的旅人，都能在这里找到属于自己的秋日诗篇，静听秋风拂过杉林的声音。

## 义王铁道自行车

## Uiwang Rail Bike

Ride a four-wheeled rail bike along the old railway track, with golden ginkgo and fiery red maple leaves drifting in the breeze, as if stepping into an autumn fairy tale. The Uiwang Rail Bike is perfect for all visitors—whether couples, families, or friends—offering a delightful cycling experience. More than just a leisurely ride, it is an immersive autumn journey into nature!

乘着四轮轨道自行车沿旧铁路线前行，金黄银杏与火红枫叶随风飘落，宛如置身秋日童话。义王铁道自行车适合所有游客，无论情侣、家庭或朋友同行，都能尽享骑行乐趣。这不仅是一场轻松旅程，更是一次沉浸式的秋日自然之旅!







## 南怡岛 Nami Island

Nami Island, famous for the K-drama *Winter So nata*, is a beloved romantic destination. In autumn, it transforms into a fairy-tale landscape, with golden ginkgo leaves covering the paths and red maple trees swaying in the breeze. Take a leisurely stroll, soak in the K-drama atmosphere, and embrace a dreamy autumn romance.

南怡岛因韩剧《冬季恋歌》而闻名，多年来稳居情侣圣地之首，至今仍承载着无数浪漫回忆，吸引剧迷纷至沓来。秋日的南怡岛宛如一幅童话画卷，金黄的银杏大道洒满落叶，火红的枫林随微风轻舞，绚丽而梦幻。在这里，你可以悠然漫步，沉浸在韩剧般的浪漫氛围中，邂逅一场诗意盎然的秋日盛宴。

At the center of the square stands a statue of Kim Gu, one of the most influential national heroes in Korea's modern history. Baekbeom Square was named in his honor to commemorate his remarkable contributions. As autumn reaches its peak, visit this tranquil place steeped in history and immerse yourself in the warmth and golden hues of the season. The vibrant autumn scenery, with golden ginkgo leaves blanketing the square, makes every snapshot picture-perfect.

广场中心矗立着韩国近代史上极具影响力的民族英雄金九先生的雕像，白凡广场正是以他的名字命名，以纪念其卓越贡献。趁着秋色最美的时节，来这里感受这片承载历史记忆的宁静之地，沉浸在秋日的温暖与金黄之中。秋色正浓，氛围感满满，金黄的银杏叶铺满广场，随手一拍皆是美照。



## 白凡广场 Baekbeom Square





# Taste Indulge

## 味蕾

We handpick local specialty restaurants instead of traditional group dining venues. Cuisine is more than just a taste; it's an experience of culture. Embrace the local way of life, savor authentic Korean flavors, and discover the essence of Korea in every bite.

我们精选当地特色餐厅，而非传统的团体餐厅。美食不仅是味蕾的享受，更是文化的体验。  
入乡随俗，品味正宗韩国风味，在每一口之间感受地道的风土人情。



Pork Knuckle set  
韩式炖猪蹄套餐



Abalone Ginseng Chicken Soup  
鲍鱼人蔘鸡汤



Hanok Special Set  
韩屋特定套餐



Emperor Submarine Seafood Pot  
皇帝潜水艇海鲜锅

Days 天数	BREAKFAST 早餐	CULINARY ARRANGEMENT 饮食安排	DINNER 晚餐
1	-	-	机上用餐 Meal On Board
2	早餐盒 Breakfast Box	猪肉汤饭 Pork Soup Rice	皇帝潜水艇海鲜锅 Emperor Submarine Seafood Pot
3	酒店早餐 Hotel Breakfast	韩式烤炖青花鱼 Korean Style Grilled & Braised Mackerel	马铃薯炖猪骨汤 Gamjatang
4	酒店早餐 Hotel Breakfast	韩式肉饼 Korean Style Meat Patty	鱿鱼猪肉烧 Osam Bulgogi
5	酒店早餐 Hotel Breakfast	辣炒鸡排 Dakgalbi	自理 Own Arrangement
6	酒店早餐 Hotel Breakfast	鲍鱼人蔘鸡汤 Abalone Ginseng Chicken Soup	韩式自助烤肉 Korean BBQ Buffet
7	酒店早餐 Hotel Breakfast	韩式炖猪蹄套餐 Pork Knuckle Set	韩屋特定套餐 Hanok Special Set
8	早餐盒 Breakfast Box	-	-

Remarks/备注

All pictures in brochure are for illustration purpose only/行程上的图片仅供参考



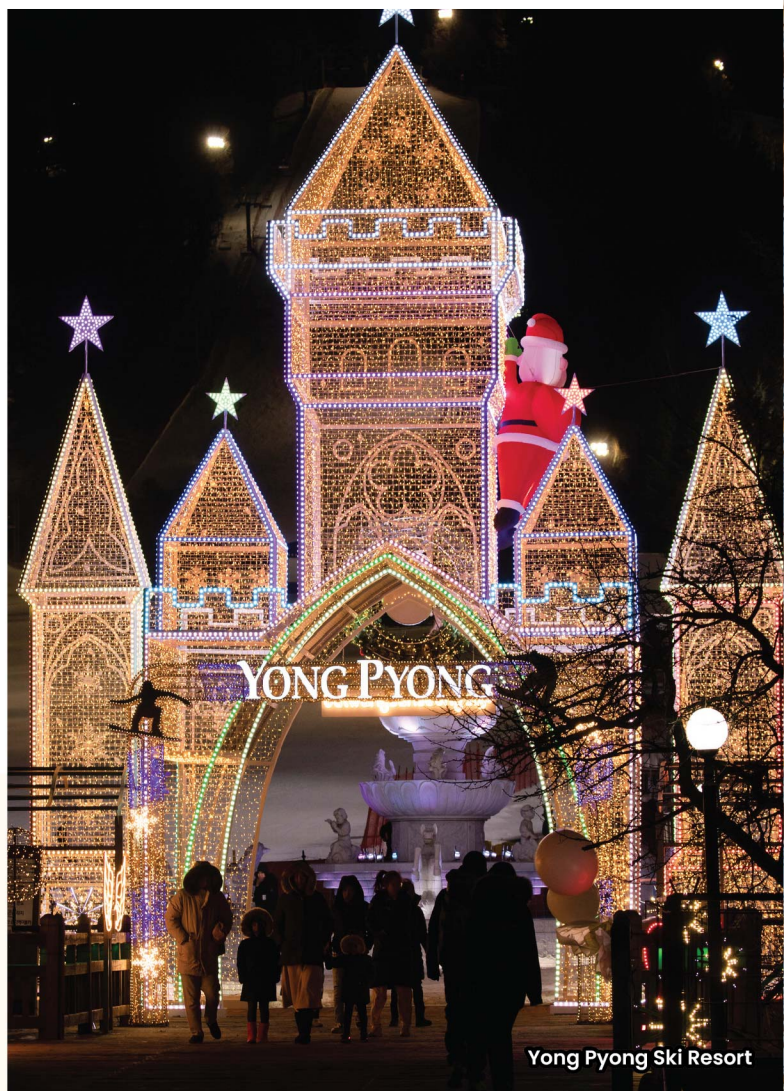


# Accommodation 旅宿

☆☆☆☆☆

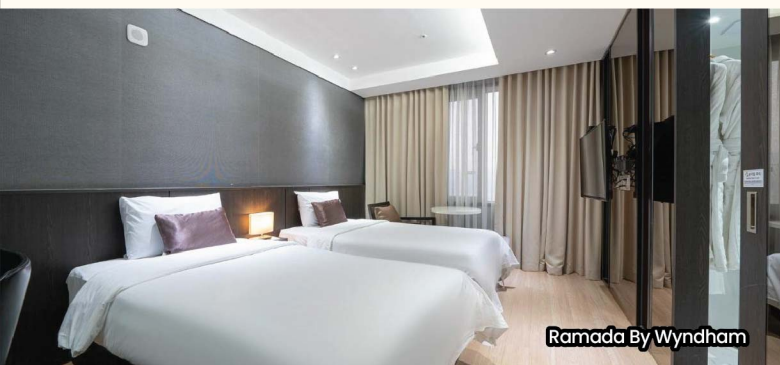


Mondrian Seoul Itaewon



Yong Pyong Ski Resort

STAY 留宿	LOCATION 地点	HOTEL 酒店	RATED 等级
2 Nights	Busan	Busan Asti Hotel or similar	★★★★★
1 Night	Gangwon-do	Yong Pyong Ski Resort or similar	★★★★★
1 Night	Yongin	Ramada By Wyndham or similar	★★★★★
2 Nights	Itaewon	Mondrian Seoul Itaewon or similar	★★★★★



Ramada By Wyndham



Busan Asti Hotel

THE SIGNATURE TOURS

Sister Brand of



Travel Partner:

thesignaturetours

The Signature Tours 卓越旅程

小红书 The Signature Tours