

7D5N Top-Notch

顶级 **韩国 KOREA**

Incheon | Wonju | Pyeongchang | Seoul | Paju | Goyang  
仁川 | 原州 | 平昌 | 首尔 | 坡州 | 高阳



NO SHOPPING STOP, NO OPTIONAL,  
NO SELLING IN COACH





# By The Signature Tours 由卓越旅程团队 Travel Designer Team 给您的游玩宝典



## Dear Valued Guest,

A unique journey through Korea, designed for those who seek a travel experience with true quality.

In seven days, we'll take you on an authentic, Top-Notch Korea.

No shopping stops, no push sales, no hidden costs, just time given back to you, so you can fully enjoy scenic cable car rides, winter skiing and water parks, stone creek cafe, Korean drama-style jjimjilbang, and even a romantic Seouldal helium balloon. Walk through a Sanmeoru Farm, take in the view of the Han River, and with every step, experience carefully curated moments.

This is a stress-free, pure, and exciting travel experience, crafted just for those who truly understand life and travel.

## 亲爱的旅客，

一趟不走寻常路的韩国之旅，专为追求旅行质感的你。

用七天时间，带你体验真正的——顶级韩国。

不进购物站、不推销、无自费项目，只为把时间还给你，让你尽情享受雪景缆车、冬日滑雪和水上乐园、森林秘境咖啡馆、韩剧同款汗蒸幕，甚至还有浪漫的热气球升空体验。走进山葡萄酒庄、眺望汉江景色，每一步，都是匠心安排。

这是一次无压力、纯粹又精彩的旅行体验，只为懂得生活、懂得旅行的你。



Gyeongbokgung Palace+Hanbok Experience  
景福宫+韩服体验



## Map 地图



# Must See Attractions

## 经典地标 深入探索

**Carefree**  
**悠游** | Enjoy relaxation, truly appreciate the world  
享受放松 感慨世界美好

**Capture**  
**收获** | The color & essence of each journey  
旅途中的色彩和精髓

**Cozy**  
**温馨** | Vibes to create joyful moment together  
共创愉悦片刻

### 发旺山缆车

## Mt Balwangsan Cable Car

We'll take a ride on Asia's longest cable car, stretching 7.4 kilometers, to the summit of Mt. Balwangsan—often called the “Alps of Korea” at over 1,300 meters above sea level. In winter, the mountain is blanketed in snow and feels like a frozen fairytale where time slows down.

我们将搭乘全长 7.4 公里的亚洲最长缆车，前往海拔 1300 多米、被誉为“韩国阿尔卑斯山”的发旺山。在冬季，整座山被雪白覆盖，缆车如同穿梭在雪国童话里，纯净得仿佛时间都慢了下来。



### 原州山林系秘境咖啡馆

## Stone Creek Cafe

Take a winter escape where you can truly breathe in the forest! Hidden deep in the mountains of Wonju, this café is a local gem known only to those in the know—like stepping into a real-life winter fairytale. Outside, frozen waterfalls and snow-covered peaks; inside, the cozy scent of coffee and pinewood fills the air

来一场真正“能呼吸到森林”的冬日小旅行吧！这里是原州人才知道的隐藏宝藏，藏在山林之间，像极了一场冬日童话。窗外是冰瀑与雪山，屋里飘着咖啡香和松木香，一口热饮下肚，仿佛连烦恼都被冻在窗外的雪里了。

### 冬季玩不停：滑雪 & 水上乐园双重畅玩

## Winter Fun Nonstop: Double the thrill with skiing & water parks

Skiing is a must do activity of winter! Feel the speed and excitement at the ski resort, challenge yourself, and race down the slopes. Don't want to freeze after skiing? Join us at an indoor water park at 700 meters above sea level, where you can enjoy warm tropical vibes and instantly escape the cold.

滑雪是冬季的代名词！在滑雪场感受速度与激情，挑战自我，尽情下坡。滑雪后不想冷得发抖？跟我们前往海拔700米的室内水上乐园，享受温暖的热带风情，瞬间摆脱寒冷。



## 山葡萄农园 🍷

# Sanmeoru Farm

It's the only winery in the metropolitan area that produces wine using domestically harvested Sanmeoru grapes. We can take part in signature programs, such as a tour of the wine tunnel and "My Wine," where you can bottle your own wine.

首都圈唯一一家使用韩国本土山葡萄酿酒的酒庄。我们可参与独特体验项目，例如酒窖隧道导览之旅以及“我的葡萄酒”DIY装瓶活动。

## 高阳汗蒸幕 🧘

# Goyang Aquafield Jjimjilbang

Every time we watch a K-drama, we see Oppa and Onni folding their towels into those adorable "sheep horn" head wraps, two little round buns by the ears, super cute! This has become a classic move in Korean jjimjilbang culture. So this time, we visited a luxurious jjimjilbang that blends tradition with modern comfort, themed around "Feeling & Healing," where we could truly relax and experience the K-drama vibe in real life.

每次看韩剧，看到 Oppa 和 Onni 把毛巾折成“羊角帽”戴在头上，耳朵两侧两颗圆圆的球球，真的太可爱啦！这其实就是汗蒸幕里的经典打卡动作。所以这次我们来到一间结合传统与现代、主打「Feeling & Healing」的豪华汗蒸幕，在轻松疗愈的氛围中，亲身感受韩剧里的放松时光。



## 系绳氦气球 🎈

# SEOULDAL Helium Balloon

A new experience that takes you vertically upwards to explore the sky of Seoul! Enjoy breathtaking views from 130 meters above ground, with panoramic vistas of Seoul's landmarks, including the Han River and Namsan.

一个全新的体验，带你垂直上升，领略首尔的天空！从130米的高空，俯瞰首尔的地标性景点，包括汉江和南山，享受令人叹为观止的全景美景。





7D 5N

# TOP-NOTCH KOREA

INCHEON | WONJU | PYEONGCHANG | SEOUL | PAJU | GOYANG

## DAY 01 KUL ✈ INCHEON

(MOB)

## DAY 02 INCHEON – 150KM – WONJU

(BB/LL/LD)

– 120KM – PYEONGCHANG

- Step into a magical frozen world at **Stone Creek Cafe!** This cozy cafe offers breathtaking views of a frozen ice valley, perfect for **enjoying a warm cup of coffee.**
- Experience **DIY Ginseng Yogurt Making** and craft your own unique, healthy treat!

## DAY 03 PYEONGCHANG

(HB/LD)

- Start the day in the snow and embark on an exciting journey of a **five-star skiing experience.**
- Dive into endless water fun at the **Ocean 700 indoor water park**, splash, play, and enjoy to the fullest!

## DAY 04 PYEONGCHANG – 200KM – SEOUL

(HB/LL/LD)

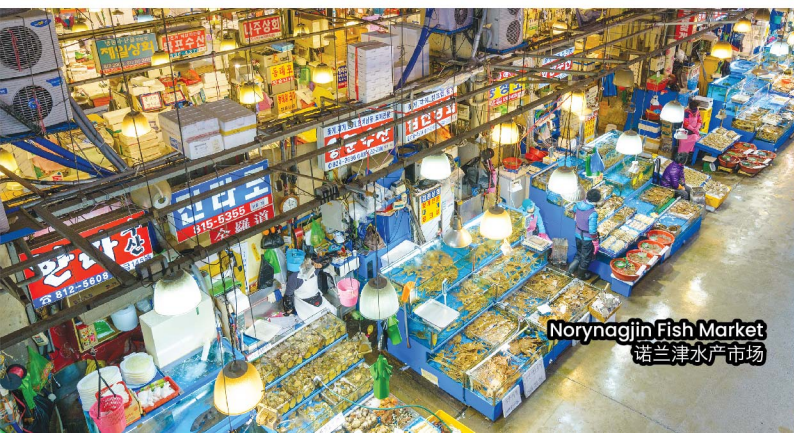
- Ascend the mountain on the **Mt Balwangsang cable car** and enjoy the breathtaking snowy view. With a **warm cup of tea in hand**, soak in the peace and beauty of nature.  
\*\* If closed due to weather conditions, will be replaced to Namsan Cable Car
- A foodie's paradise! **Gwangjang Market** is the ultimate spot for traditional Korean street food, don't leave without tasting your way through the flavours!
- **Noryangjin Fish Market**, heaven for seafood lovers! We will be having dinner here and it will be cooked fresh on the spot – it's a flavour explosion you won't forget!

## DAY 05 SEOUL – 80KM – PAJU – 55KM

(HB/LL/LD)

– GOYANG – 30KM – SEOUL

- **Sanmeoru Farm:** Step into the wine tunnel and soak in the aroma of aging barrels. **Taste wine** made from Korea's native wild grapes (Sanmeoru) and **bottle your own** to take home and savor later!
- Unlock the new trendy relaxation spot in Korea and experience the modern luxury of sauna and spa facilities – **Goyang Aquafield Jjimjilbang.**
- The **SEOULDAL Helium Balloon**, a new attraction debuting in 2024, has become one of Seoul's most popular landmark photo spots. We'll take you on a ride to experience it firsthand!  
\*\* If closed due to weather conditions, will be replaced to Seoul Sky Observatory + 1 drink
- **Han River Sunset Cruise** takes you to experience the mesmerizing views of Seoul's cityscape and the banks of the Han River from a fresh perspective.



## DAY 06 SEOUL

(HB/LL)



• **Gyeongbokgung Palace:** Dress up as an 'oppa' or 'onni' for the day in a traditional **Hanbok** and capture stunning photos – a must for your photo diary!



• **Nanta Show (VIP Seats):** A unique kitchen where you get to enjoy a spectacular performance combining acrobatics, comedy, and kitchen percussion.

• **Myeongdong Shopping District:** A fashion paradise where you can stay on top of the latest street style trends.

## DAY 07 SEOUL – 60KM – INCHEON ✈ KUALA LUMPUR

(BB)



### Meal Codes:

\*MOB=Meals on Board/HB=Hotel Breakfast/BB=Breakfast Box/LL=Local Lunch/LD=Local Dinner



Exclusive Arrangement

### Disclaimer:

Sequences of itinerary are subject to local arrangement. Itineraries, meals, hotels and transportation are subject to change without prior notice.





7天 5晚

## 顶级韩国

仁川 | 原州 | 平昌 | 首尔 | 坡州 | 高阳

第01天 吉隆坡 ✈️ 仁川

(机上用餐)

第02天 仁川 - 150KM - 原州  
- 120KM - 平昌

(早餐盒/道地午餐/道地晚餐)

- 踏入石溪咖啡厅，仿佛进入了一个神奇的冰雪世界！这家温馨的咖啡馆有着让人惊叹的冰谷美景，我们可以在这里边欣赏美景边喝杯温暖的咖啡。
- 体验DIY人参酸奶制作，亲手调制属于你的专属健康美味。

第03天 平昌

(酒店早餐/道地晚餐)

- 这一天，从雪地出发，开启一段五星级滑雪体验的精彩旅程。
- 在位于海拔700米的室内水上乐园，畅享水上乐趣，尽情玩乐！

第04天 平昌 - 200KM - 首尔

(酒店早餐/道地午餐/道地晚餐)

- 乘坐发旺山缆车轻松登顶，置身如童话般的白雪世界，一杯热茶在手，沉浸于大自然的宁静与美丽中，这种体验不可错过。  
\*\* 若遇到天气原因关闭，将替换南山缆车
- 吃货的天堂！广藏市场，这里是韩国传统小吃的集中地，吃遍美味不容错过！
- 诺兰津水产市场，海鲜控的最爱！我们将在这里享用晚餐，现煮活海鲜，保证让你吃得过瘾！

第05天 首尔 - 80KM - 坡州 - 55公里  
- 高阳 - 30KM - 首尔

(酒店早餐/道地午餐/道地晚餐)

- 山葡萄园：走进酒香四溢的葡萄酒隧道，感受陈酿的魅力。品尝由韩国本土山葡萄酿制的美酒，还能亲手装瓶一瓶带回家，细细品味！
- 解锁韩国新晋网红放松圣地，带你体验现代豪华的桑拿和水疗设施 — 高阳汗蒸幕。
- 2024 年新亮相的 SEOULDAL 系绳氦气球，是首尔最热门的打卡地标。我们将带你亲自登上它！  
\*\* 若遇到天气原因关闭，将替换乐天世界塔 + 一杯饮料
- 汉江夕阳游船带你以全新的视角，沉浸在首尔市区与汉江两岸的迷人景色中，感受日落时分的宁静。

第06天 首尔

(酒店早餐/道地午餐)



- 景福宫：化身一天的欧巴和欧尼穿着韩服，拍照打卡，巨出片！
- 乱打秀 (VIP座位)：走进与众不同的厨房，欣赏一场结合杂技、喜剧和厨具敲击乐的精彩表演，保证让你笑到肚子疼！
- 明洞商圈：潮流气场爆棚，让你随时跟上街头最in的风尚。

第07天 首尔 - 60KM - 仁川 ✈️ 吉隆坡

(早餐盒)

Myeongdong Shopping District  
明洞商圈

### 免责声明：

行程次序以当地旅行社安排为准。行程，膳食，住宿，交通等可能会因不可抗拒因素而更动，恕不另行通知。

Han River Sunset Cruise  
汉江夕阳游船

# Taste Indulge

## 味蕾



**Western Set**  
西式套餐



**Long Leg Crab Set**  
长脚蟹套餐



**Ginseng Chicken Soup  
with Abalone**  
鲍鱼人参鸡汤



**Beef & Pork Shabushabu**  
牛猪肉涮涮锅

| Days 天数 | BREAKFAST 早餐            | LUNCH 午餐                                       | DINNER 晚餐                       |
|---------|-------------------------|--|---------------------------------|
| 1       | -                       | -  | 机上用餐<br>Meal on board           |
| 2       | 早餐盒<br>Breakfast Box    | 韩定食<br>Hanjeongsik Set                         | 西式套餐<br>Western Set \$95        |
| 3       | 酒店早餐<br>Hotel Breakfast | 自理<br>Own Arrangement                          | 韩式烧烤<br>Korean BBQ              |
| 4       | 酒店早餐<br>Hotel Breakfast | 烤鲭鱼套餐<br>Grilled Pollack Set                   | 长脚蟹套餐<br>Long Leg Crab Set \$40 |
| 5       | 酒店早餐<br>Hotel Breakfast | 鲍鱼人参鸡汤<br>Ginseng Chicken Soup<br>with Abalone | 西式套餐<br>Western Set \$72        |
| 6       | 酒店早餐<br>Hotel Breakfast | 牛猪肉涮涮锅<br>Beef & Pork Shabushabu \$65          | 自理<br>Own Arrangement           |
| 7       | 早餐盒<br>Breakfast Box    | -  | -                               |

Remarks/备注:

All pictures in brochure are for illustration purpose only/行程上的图片仅供参考

\*\* MEAL COST - USD / 餐标 - 美金 \*\*



# Accommodation 旅宿

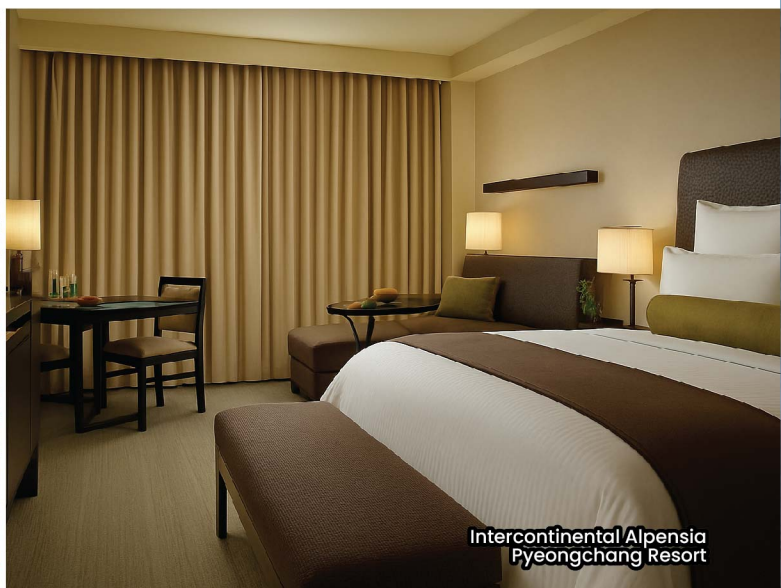


Embark on a complete journey at 5-star hotel, offering a quality & comfortable stay.

全程安排五星级酒店, 让您在整个旅程中享受到有质量且舒适的住宿环境。



Intercontinental Alpensia  
Pyeongchang Resort



Intercontinental Alpensia  
Pyeongchang Resort



Mondrian Seoul Itaewon



Mondrian Seoul Itaewon

|  STAY 留宿 |  LOCATION 地点 |  HOTEL 酒店 |  RATED 等级 |
|---|---|--|--|
| 2 Nights  | Pyeongchang   | Intercontinental Alpensia<br>Pyeongchang Resort  | ★★★★★  |
| 3 Nights  | Itaewon   | Mondrian Seoul Itaewon<br>or similar   | ★★★★★  |

THE SIGNATURE  
TOURS

Sister Brand of



Travel Partner:

 thesignaturetours

 The Signature Tours 卓越旅程

 The Signature Tours