

THE SIGNATURE TOURS

10/
11D
8N

ESSENCE OF TANZANIA & UGANDA

ARUSHA / SERENGETI NATIONAL PARK / NGORONGORO CONSERVATION AREA /
ENTEBBE / BWINDI IMPENETRABLE FOREST

坦桑尼亚和乌干达

阿鲁沙 / 塞伦盖蒂国家公园 / 恩戈罗恩戈罗保护区 / 恩德培 / 布恩迪森林



2025 Nov 16

首席旅游设计师
Chief Travel Designer

GJ Wai

AFRICA

S-Class Journey, Signature Memories



全心服务 难忘体验



The GD Premium Team embraces your journey with unwavering authenticity, methodically crafting every nuance. Our service stems from the core, characterized by a client-first professionalism, providing wholehearted and adept planning. GD Premium团队满怀真诚，为您的旅程精心雕琢每个细节。我们的服务源自核心，以客户至上的专业精神为特征，提供全心全意和熟练的规划。



Professional Team

专业旅游团队

Our people are certified travel professionals who have over years of experience. Every staff undergoes extensive customer service and quality assurance training.

我们的团队是经过认证的旅游专业人员，拥有超过多年的经验。每位员工都接受了广泛的客户服务和质量保证培训。



Exclusive & Meticulous Route Planning

独家精心策划

Our Exclusive & Meticulous Route Planning ensures every journey is tailored to your dreams and designed with meticulous care. It may provide you with an unforgettable journey!

带一起用以前所未有的方式来探索世界。我们会提供独家细致的路线规划，确保每一次旅程都根据您的梦想专门定制，让您拥有难以忘怀的旅程体验！



Accommodation

住宿

Even in a limited natural environment, we will still strive to provide you with the best accommodation arrangements. We will carefully select the hotel's room types and locations to ensure a standard-compliant lodging experience. This allows you to truly understand and experience the simple and unpretentious local way of life. Isn't this a special travel experience?

即使在有限的原生态环境中，我们仍然会尽力为您提供最佳的住宿安排。同样会仔细筛选酒店的房型和地理位置，以确保提供符合标准的住宿体验。从而您能够真正了解并体会当地朴实无华的生活方式，这何曾不是一种另类的旅游体验吗？



The Great Migration occurs between July and September from the Serengeti to the Masai Mara in Kenya.
大迁徙发生在七月到九月之间，从塞伦盖蒂到肯尼亚的马赛马拉。

10/11D 8N

ESSENCE OF TANZANIA & UGANDA

ARUSHA / SERENGETI NATIONAL PARK /
NGORONGORO CONSERVATION AREA / ENTEBBE /
BWINDI IMPENETRABLE FOREST

DAY 01 KUL ✈️ KILIMANJARO, TANZANIA (MOB)

DAY 02 KILIMANJARO – 55KM – ARUSHA (LL/LD)

- Arrival in Kilimanjaro – one among the top five most developed regions of Tanzania.
- Arusha city tour: Clock Tower, Maasai Market, Cultural Heritage Center and Jewelry shop.

DAY 03 ARUSHA – 320KM (HB/PL/LD)
– SERENGETI NATIONAL PARK

- Afternoon game drive in **Serengeti National Park** – the home of the Great Migration and may very well be one of the last true natural wonders on planet earth.

DAY 04 SERENGETI NATIONAL PARK (HB/PL/LD)

- Full day game drive in search of the Big 5 and other wild animals that roam freely in the park.

Optional: Hot Air Balloon (USD600/pax)

※ Just imagine floating above the Serengeti plains skimming treetops in complete silence whilst seeing wildlife on the ground below. You'll have less one early morning game drive, if you choose this option. (It is subject to availability and appropriate weather conditions).

DAY 05 SERENGETI – 80KM (HB/PL/LD)
– NGORONGORO CONSERVATION AREA

- **Olduvai Gorge Museum** tells the story of the paleoanthropological artefacts that have been discovered here and the research they have generated.
- **Ngorongoro Conservation Area** – Descend to the floor of the Crater for game viewing drives. Often described as the "Eighth Wonder of The World," the Ngorongoro Crater is a spectacular natural sanctuary for over 25,000 animals, including the black rhino. It is also a conservation area inhabited by the Maasai tribe.

DAY 06 NGORONGORO – 198KM – ARUSHA (HB/CL/LD)

- A walk around the workings of the coffee plantation to see how the coffee is grown, harvested, dried, and produced into the aromatic coffee that we drink every day.

DAY 07 ARUSHA – 55KM – KILIMANJARO (HB/LL/LD)
✈️ – ENTEBBE, UGANDA

- Take a flight to Entebbe, a city in Central Uganda which is located on Lake Victoria peninsula.
- Upon arrival, transfer to hotel for rest.

DAY 08 ENTEBBE – (HB/LL/LD)
✈️ – BWINDI IMPENETRABLE FOREST

- Take a domestic flight to Bwindi.
- **Batwa Cultural Village** is where the Batwa still live in the same way they used to years ago in tree houses.

DAY 09 BWINDI IMPENETRABLE FOREST (HB/PL/LD)

- **Bwindi Impenetrable Forest Gorilla Trekking** – Residing in this stunning "impenetrable" rainforest, Bwindi protects over 300 robust gentle mountain gorillas. Trekking through this lush abundant thicket is a captivating experience; made more spectacular when you silently come upon these majestic beauties. This is a spectacularly humbling experience that you will never forget. (value USD700)

DAY 10 BWINDI ✈️ ENTEBBE ✈️ KUL (HB/MOB)

- Take a domestic flight back to Entebbe.
- Arriving Kuala Lumpur.



Serengeti National Park
塞伦盖蒂国家公园

Meals Code:

*MOB=Meals on Board/HB=Hotel Breakfast/PL=Picnic Lunch/LL=Local Lunch/CL=Chinese Lunch/LD=Local Dinner

Disclaimer:

Sequences of itinerary are subject to local arrangement. Itineraries, meals, hotels and transportation are subject to change without prior notice.



10/11天 8晚

坦桑尼亚和乌干达

阿鲁沙 / 塞伦盖蒂国家公园 /
恩戈罗恩戈罗保护区 / 恩德培 / 布温迪森林

第01天 吉隆坡 ✈️ 吉力马扎罗, 坦桑尼亚 (机上用餐)

第02天 吉力马扎罗 - 55KM - 阿鲁沙 (道地午餐/道地晚餐)

- 抵达坦桑尼亚五大最发达地区之一的吉力马扎罗。
- 阿鲁沙市区游：钟楼、马赛市场、文化遗产中心和珠宝店。

第03天 阿鲁沙 - 320KM (酒店早餐/野餐式午餐/道地晚餐)
- 塞伦盖蒂国家公园

- 下午在塞伦盖蒂国家公园猎游，这里是大迁徙的发源地，很可能是地球上最后一个真正的自然奇观。

第04天 塞伦盖蒂国家公园 (酒店早餐/野餐式午餐/道地晚餐)

- 全天驱车猎游，寻找五大野生动物和其他在公园里自由驰骋的野生动物。

自费项目：热气球 (600美元/位)

※想象一下，在塞伦盖蒂平原上空漂浮，在完全安静的环境中掠过树梢，同时观赏地面上的野生动物。如果您选择了这一行程，您将少参加一次清晨的猎游活动。(视情况和天气条件而定)。

第05天 塞伦盖蒂 - 80KM (酒店早餐/野餐式午餐/道地晚餐)
- 恩戈罗恩戈罗保护区

- 奥杜威峡谷博物馆讲述了在这里发现的古人类文物及其引发的研究故事。
- 恩戈罗恩戈罗保护区 - 下到火山口底部，驱车观看动物。恩戈罗恩戈罗火山口常被誉为“世界第八大奇迹”，是一个壮观的自然庇护所，有包括黑犀牛在内的 25000 多只动物在此栖息。这里也是马赛部落居住的保护区。

第06天 恩戈罗恩戈罗 - 198KM (酒店早餐/中式午餐/道地晚餐)
- 阿鲁沙

- 参观咖啡种植园的运作过程，了解咖啡是如何种植、收获、烘干并制成我们每天品尝的香浓咖啡。

第07天 阿鲁沙 - 55KM - 吉力马扎罗 (酒店早餐/道地午餐/道地晚餐)
✈️ 恩德培, 乌干达

- 乘坐飞机前往位于维多利亚湖半岛的乌干达中部城市—恩德培。
- 抵达后，送往酒店休息。

第08天 恩德培 ✈️ 布温迪森林 (酒店早餐/道地午餐/道地晚餐)

- 乘坐国内航班前往布温迪。
- 巴特瓦文化村里的巴特瓦人仍然以多年前的方式生活在树屋里。

第09天 布温迪森林 (酒店早餐/野餐式午餐/道地晚餐)

- 布温迪森林寻找大猩猩徒步之旅 - 布温迪的“不可穿越”热带雨林保护着 300 多只健壮、温顺的山地大猩猩。在这片郁郁葱葱的灌木丛中跋涉是一种迷人的体验；当您悄无声息地遇到这些雄伟的猩猩时，这种体验就更加壮观了。这是一次令人谦卑的壮观体验，您将终生难忘。(价值 700美元)

第10天 布温迪 ✈️ 恩德培 ✈️ 吉隆坡 (酒店早餐/机上用餐)

- 乘坐国内航班返回恩德培。
- 抵达吉隆坡。



免责声明:

行程次序以当地旅行社安排为准。行程，膳食，住宿，交通等可能会因不可抗拒因素而更动，恕不另行通知。



Must See Attractions



经典地标 深入探索

Carefree 悠游

Enjoy relaxation, truly appreciate the world
享受放松 感慨世界美好

Capture 收获

The color & essence of each journey
旅途中的色彩和精髓

Cozy 温馨

Vibes to create joyful moment together
共创愉悦片刻

塞伦盖蒂国家公园

Serengeti National Park



Together with Kenya's Maasai Mara National Reserve, constitute Africa's most famous wildlife park, spread across the stunning landscape of northern Tanzania. It is a precious ecosystem that supports the annual migration of wildebeest across the Serengeti and Masai Mara. It is the largest land mammal migration on earth, with over one million animals migrating after the rains, including more than 1.5 million white-bearded wildebeest and 250,000 zebras. Herds of lions, as well as elephants, giraffes, gazelles and antelopes, roam the vast grasslands, weaving in and out of the strangely shaped acacia trees. As well as the traditional safari by vehicle, hot air balloon rides over the Serengeti plains are also available based on optional.

与肯尼亚的马赛马拉国家保护区共同构成了非洲最著名的野生动物公园，分布在坦桑尼亚北部迷人的风景区。这是一个珍贵的生态系统，支持着每年穿越塞伦盖蒂和马赛马拉的角马迁徙。这是地球上最大规模的陆地哺乳动物迁徙，雨后有超过 100 万只动物迁徙，其中包括 150 多万只白角羚和 25 万只斑马。成群的狮子以及大象、长颈鹿、瞪羚和羚羊游荡在广袤的草地上，在造型奇特的金合欢树之间穿梭。除了传统的乘车游猎，还可根据需要选择乘坐热气球飞越塞伦盖蒂平原。



恩戈罗恩戈罗保护区

Ngorongoro Conservation Area



Located in the cratered highlands of northern Tanzania, the area is renowned for its archaeological and geological significance, abundant wildlife and beautiful scenery. The reserve encompasses the famous caldera, the renowned Olduvai Gorge and the vast grasslands, forests and mountains that extend to the Serengeti. The 8,000 square kilometer reserve is renowned for its natural beauty and has been inscribed on the UNESCO World Heritage List.

恩戈罗恩戈罗保护区 - 位于坦桑尼亚北部的火山口高原，以其考古和地质意义、丰富的野生动物和美丽的风景而闻名于世。保护区包括著名的火山口、闻名遐迩的奥杜威峡谷以及延伸至塞伦盖蒂的广袤草原、森林和山脉。这个面积达 8000 平方公里的保护区以其自然美景而闻名，并已被联合国教科文组织列入《世界遗产名录》。





布温迪森林



TICKETS VALUED
AT UP TO
USD700

Bwindi Impenetrable Forest National Park

Located in southwestern Uganda, the Bwindi Impenetrable Forest is said to be Africa's oldest rainforest. It is world-renowned for its excellent gorilla-sighting opportunities – the forest is home to half of the remaining mountain gorillas on earth. This gorilla experience takes place among a rugged landscape of dense jungle, cascading waterfalls, sparkling mountain streams, deep valleys, and steep ridges. The untouched forest has been declared a UNESCO World Heritage Site for its breathtaking natural beauty and unique ecological significance, and aside from the amazing gorilla interactions, there are other drawcards such as a network of forest walks, over 340 species of bird to spot, and a variety of brightly colored butterflies to identify.

布温迪森林又被称为布恩迪难以穿越森林位于乌干达西南部，据说是非洲最古老的热带雨林。这里因其绝佳的大猩猩观赏机会而闻名于世——地球上仅存的一半山地大猩猩都生活在这片森林里。这次大猩猩之旅将在茂密的丛林、飞流直下的瀑布、波光粼粼的山涧、幽深的山谷和陡峭的山脊组成的崎岖地貌中进行。这片未经开发的森林因其令人惊叹的自然美景和独特的生态意义而被联合国教科文组织宣布为世界遗产。除了令人惊叹的大猩猩互动之外，这里还有其他吸引人的地方，比如森林步行、340多种鸟类可供观赏，还有各种色彩鲜艳的蝴蝶可供辨认。



坦桑尼亚咖啡

Tanzania Coffee



Ever wondered how the humble coffee bean goes from the bush to your cup of coffee? Discover the world of coffee like never before. A walk around the workings of the coffee plantation to see how the coffee bean is nurtured, harvested, dried and finally roasted to produce a myriad of different blends that sate the taste of the most ardent of coffee connoisseurs.

有没有想过不起眼的咖啡豆是如何从灌木丛中变成您杯中的咖啡？参观咖啡种植园，了解咖啡豆是如何培育、收获、烘干并最终烘焙成各种不同的混合咖啡，以满足最狂热的咖啡鉴赏家的口味。探索前所未有的咖啡世界。





坦桑尼亚简介

About Tanzania



When you think of Tanzania, the first thing that probably comes to mind is the endless grasslands and wildlife that can be found in the Serengeti National Park and the Ngorongoro Conservation Area. All these natural wonders, and more, can be found in this exceptionally diverse African country. Then, of course, there is the endlessly evocative Kilimanjaro, made famous by Ernest Hemingway's "The Snows of Kilimanjaro", and indeed the conquest of Africa's highest mountain is not for professionals. Despite the many ethnic groups in Tanzania (estimated 120 tribes), all with their own unique cultures and traditions, they live together in harmony. From the fierce Maasai warriors to the quiet, rhythmic villages of the Swahili, the daily life of Africans, which has lasted for centuries, can still be seen in Tanzania today.

提起坦桑尼亚，你或许最先想到的就是一望无际的草原与众多野生动物，这壮丽的景色在塞伦盖蒂国家公园、恩戈罗恩戈罗保护区内都可以看到。在这个异常多样化的非洲国家，所有这些自然奇观，甚至更多，都可以在这里找到。当然，还有令人充满无限遐想的吉力马扎罗，它因海明威的《吉力马扎罗的雪》而闻名，而事实上，征服这座非洲最高山也并非专业人士才能到达。尽管坦桑尼亚民族众多（约120个部落），都有属于自己独特的文化和传统，但他们和睦相处。从凶猛的马赛勇士到斯瓦希里安静富有节奏感的村庄，在坦桑尼亚的今天，依然可以看到已经历经数个世纪的非洲人的日常生活。



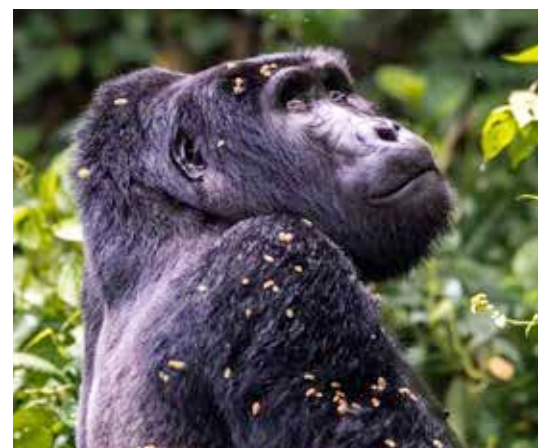
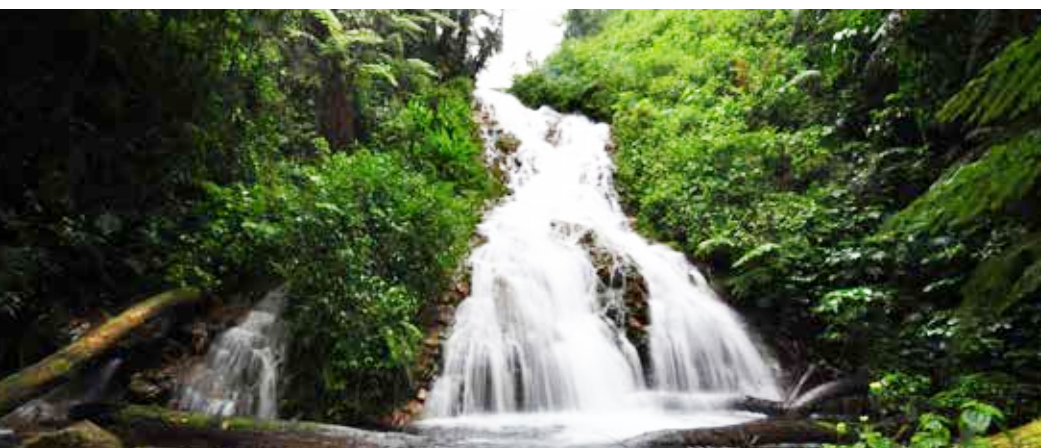
乌干达简介

About Uganda



Uganda, or the 'Pearl of Africa', as it was famously dubbed by Winston Churchill, is characterized by relatively dry and flat savanna in the north, with verdant mountains in the West, and vast dense and remarkably lush forests in the central region. The nation is home to an astonishingly diverse range of African wildlife including the highly endangered mountain gorilla which can be found in the Bwindi Impenetrable Forest. Add to this some friendly locals, a burgeoning cultural scene, and a capital city full of lively bars, clubs and restaurants, and it is easy to see why Uganda has gained itself a reputation as 'Africa's friendliest country'.

乌干达被温斯顿·丘吉尔誉为“非洲明珠”，其北部是相对干燥平坦的热带稀树草原，西部是青翠的山脉，中部则是茂密葱郁的森林。这里栖息着种类繁多的非洲野生动物，包括濒临灭绝的山地大猩猩。此外，乌干达还有友好的当地居民、蓬勃发展的文化活动以及充满活力的酒吧、俱乐部和餐馆的首都城市，因此不难理解为什么乌干达赢得了“非洲最友好国家”的美誉。



Accommodation 旅宿

☆☆☆☆

Embark on a complete journey at 4-star hotel, offering a quality & comfortable stay.
全程安排四星级酒店，让您在整个旅程中享受到有质量且舒适的住宿环境。



STAY 留宿	LOCATION 地点	HOTEL 酒店	RATED 等级	REMARKS 备注
2 Nights	Arusha	Arusha Coffee Lodge or similar	★★★★★	Lying on the gently rolling foothills that cascade down from the ever-present Mount Meru is the bustling and vibrant town of Arusha.
2 Nights	Serengeti	Serena Lodge or similar	★★★★★	Is an award-winning gem of a hotel in one of the most beautiful settings in Tanzania.
1 Night	Ngorongoro	Serena Lodge or similar	★★★★★	Clinging to the rim of one of the world's last remaining natural wonders, the enchanted Ngorongoro Crater.
1 Night	Entebbe	Protea Hotel by Marriott or similar	★★★★★	Located on the glistening shores of Lake Victoria and a convenient 1km from the Entebbe airport.
2 Nights	Bwindi Forest	Engagi Lodge or similar	★★★★★	Located in a breathtaking setting offering stunning views over the forest canopy.



THE SIGNATURE TOURS

GD Partner:

thesignaturetour
The Signature Tour